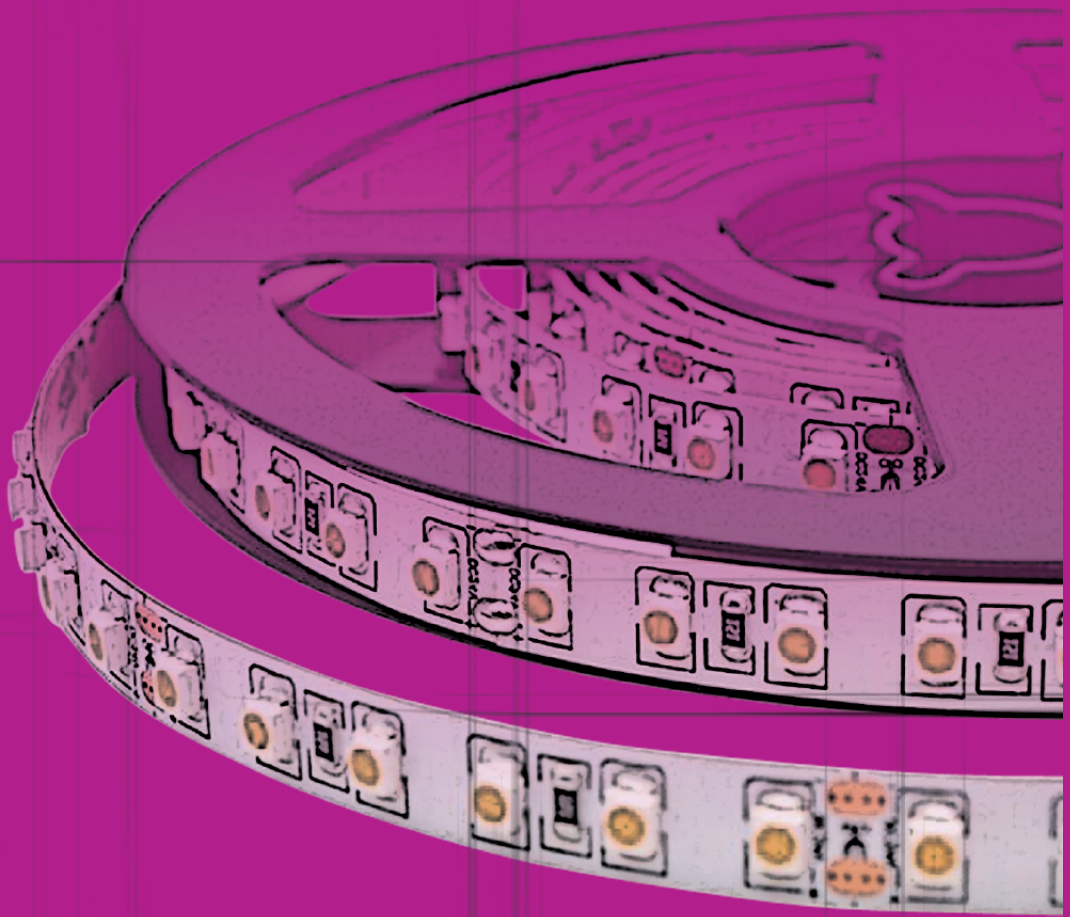




LED LIGHTINGS





LED LIGHT (WITHOUT DRIVER)
Beam Angle 120 DEGREE

Size: L165 x W50 x H9mm
Energy: DC12V, 1.8W
Color: Warm White
UOM: PC

L LED.A50.WW



LED LIGHT WITH MOTION SENSOR
Beam Angle 120 DEGREE

Size: L450 x W50 x H9mm
Color: Warm White
UOM: PC

Energy: DC12V, 6.4W
L LED.A51.MS.WW

WITHOUT DRIVER & MOTION SENSOR
Energy: DC12V, 5.4W
L LED.A51.WW



ROUND LED PANEL LIGHT

Energy: 9 / 12W
Color: Warm White / White
Cutout size: 135 / 155mm
Outer size: 146 / 170mm
UOM: PC

L LED.KC14R.146

L LED.KC14R.170



ROUND LED SURFACE MOUNTED LIGHT

Energy: 12W
Color: Warm White / White
Diameter: 170 / 225mm
UOM: PC

L LED.KC16R.170

L LED.KC16R.225



SQUARE LED PANEL LIGHT

Energy: 9 / 12W
Color: Warm White / White
Cutout size: 135 x 135mm
155 x 155mm
Outer size: 146 x 146mm
170 x 170mm
UOM: PC

L LED.KC15SQ.146

L LED.KC15SQ.170



ROUND LED SURFACE MOUNTED LIGHT

Energy: 12W
Color: Warm White / White
Diameter: 170 x 170mm
225 x 225mm
UOM: PC

L LED.KC17SQ.170

L LED.KC17SQ.225



RECHARGEABLE LED CABINET LIGHT WITH MOTION SENSOR SWITCH (20 LEDs; 12,000K White)

Size: 15 x 19 x 190mm
UOM: PC

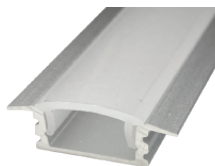
L LED.S767.WH



ALUMINIUM PROFILE with PVC cover for LED strip

Size: L3000 X W16.9 X H7mm
Finishing: NA
UOM: PC

L NC.LED580.10



ALUMINIUM PROFILE WITH PVC COVER FOR LED STRIP

Size: L3048 x W24 x H8.5mm
Finishing: NA / Black
UOM: PC

L NC.LED531.10



END CAP (LEFT & RIGHT)

Finishing: Light Grey
UOM: PR

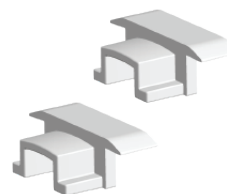
L NEC.LED531.LG



ALUMINIUM PROFILE COMPLETE with PVC cover for LED strip

Size: L3048 X W14.30 X H9mm
Finishing: NA / Black
UOM: PC

L NC.LED550.10



END CAP (LEFT & RIGHT)

Finishing: Light Grey / Black
UOM: PR

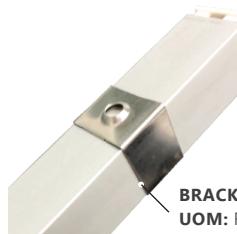
L NEC.LED521.LR



CORNER ALUMINIUM PROFILE with PVC cover for LED strip

Size: L3000 X W10.5 X H16mm
Finishing: NA / Black
UOM: PC

L NC.LED570.10



END CAP (LEFT & RIGHT)

Finishing: LIGHT GREY
UOM: PR

L NEC.LED5556.LR

BRACKET
UOM: PR

L NEC.LED570.B



END CAP (LEFT & RIGHT)

Finishing: NA / Black
UOM: PR

L NEC.LED570.LR.BL



LED INDUCTION CABINET LAMP

Size: W40 x L65mm
UOM: PC

L LED.A6540.W



LED FLEXIBLE STRIP LIGHT TRI COLOUR WHITE

Size: 2.8 x 3.5mm x 120 BULB/M
Colour: Tri Colour White (3000K/4000K/6000K)
 Width: 8MM
UOM: RL

L LED.F2835.120.TW

L LED.F2835.120.WW



PIR SENSOR LIGHT

Size: L13 x W14 x H16mm
Energy: 12V; 60W
UOM: PC

L NC.SPIR1.CH



TOUCH SENSOR LIGHT

Size: L11 x W11 x H20 mm
Energy: 12V; 60W
UOM: PC

L NC.STCH1.CH



INFRARED SENSOR LIGHT SINGLE DOOR

Size: L13 x W12 x H12mm
Energy: 12V; 60W
UOM: PC

L NC.SIRD1.CH



INFRARED SENSOR LIGHT TWIN DOOR

Size: L13 x W12 x H12mm
Energy: 12V; 60W
UOM: PR

L NC.SIRD2.CH



LED FLEXIBLE STRIP DRIVER

Energy: 35 / 60 / 150W
UOM: PC

L LED.FDV12



LED DRIVER JUNCTION BOX Come With 2 Pin Plug (6 Slots)

Size: L60 x W30 x H10 mm
Cable Length: 140mm
Energy: 5V-24VOC, 5A
UOM: PC

L LED.MJB6



6 SLOTS LED DRIVER C/W 2 PIN PLUG (INPUT : 80-240V AC, OUTPUT : 12V)

Energy: 24 / 36 / 60 / 100W
UOM: PC

L LED.MDV13



**EXTENSION CABLE
Come With 2/3 Pins Plug**

Length : 2meter
UOM: PC

2 Pins Plug
L LED.MEC2.2000.2

3 Pins Plug (For Sensor Use)
L LED.MEC2.2000.3



**EXTENSION CABLE
Come With 2 Pins Plug**

Length: 150mm
UOM: PC

L LED.MEC1.0150.2



**L SHAPE SOLDERLESS CONNECTOR
Come With 2 Pins For SMD LED Strip Light**

Length: 5 / 8 meters
UOM: PC

L LED.MEC3.LC.5
L LED.MEC3.LC.8



**MIDDLE SOLDERLESS CONNECTOR
Come With 2 Pins For SMD LED Strip Light**

Length: 5 / 8 meters
UOM: PC

L LED.MEC3.MC.5
L LED.MEC3.MC.8



**T-SHAPE SOLDERLESS CONNECTOR
Come With 2 Pins For SMD LED Strip Light**

Length: 5 / 8 meters
UOM: PC

L LED.MEC3.TC.5
L LED.MEC3.TC.8



**SOLDERLESS CONNECTING CABLE
Come With 3 Pins Plug
For 5mm SMD LED Strip Light**

Length: 150mm
UOM: PC

For 5mm SMD LED Strip Light
L LED.MEC4.0150.5
For 8mm SMD LED Strip Light
L LED.MEC4.0150.8



**MIDDLE SOLDERLESS CONNECTOR
COME WITH 3 PINS
FOR 8MM SMD LED STRIP LIGHT**

UOM: PC

L LED.MEC4.MC.8



**SOLDERLESS CONNECTING CABLE
Come With 2 Pins Plug**

Length: 150mm
UOM: PC

For 5mm COB LED Strip Light
L LED.MEC5.0150.5
For 8mm COB LED Strip Light
L LED.MEC5.0150.8



**L SHAPE SOLDERLESS CONNECTOR
Come With 2 Pins**

UOM: PC

For 5mm COB LED Strip Light
L LED.MEC5.LC.5
For 8mm COB LED Strip Light
L LED.MEC5.LC.8



**MIDDLE SOLDERLESS CONNECTING CABLE
Come With 2 Pins Plug**

Length: 150mm
UOM: PC

For 5mm COB LED Strip Light
L LED.MEC5.MC.5
For 8mm COB LED Strip Light
L LED.MEC5.MC.8



**T SHAPE SOLDERLESS CONNECTOR
Come With 2 Pins**

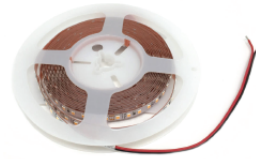
UOM: PC

For 5mm COB LED Strip Light

L LED.MEC5.TC.5

For 8mm COB LED Strip Light

L LED.MEC5.TC.8



LED FLEXIBLE STRIP LIGHT

Size: 2.8 x 3.5mm, 120 BULB/M
Colour: Warm White
UOM: RL

L LED.C2835.120.WW



**ALUMINIUM PROFILE WITH
SILICONE COVER FOR LED STRIP**

Size: L3000 x W6 x H9.3 mm
Colour: Silver / Black
UOM: PC

L NC.LED590.10

L NC.LED590.10.BL



**ALUMINIUM PROFILE WITH
2 SILICONE COVER FOR LED STRIP
For Wood Thickness 18mm**

Size: L3000 x W6 x H18 mm
UOM: PC

L NC.LED600.10



**ALUMINIUM PROFILE WITH
SILICONE COVER FOR LED STRIP**

Size: L3000 x W9.5 x H9.4 mm
Colour: Silver / Black
UOM: PC

L NC.LED610.10

L NC.LED610.10.BL



**ALUMINIUM PROFILE WITH
SILICONE COVER FOR LED STRIP**

Size: L3000 x W24.8 x H7 mm
UOM: PC

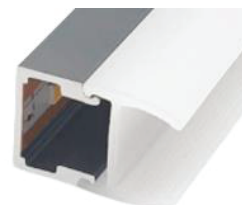
L NC.LED620.10.BL



**ALUMINIUM PROFILE WITH
PC COVER FOR LED STRIP
For wood thickness 18mm**

Size: L3000 x W16.5 x H19.2 mm
UOM: PC

L NC.LED630.10



**ALUMINIUM PROFILE WITH
PC COVER FOR LED STRIP
For Glass Thickness 6-8mm**

Size: L3000 x W10.6 x H16.9 mm
UOM: PC

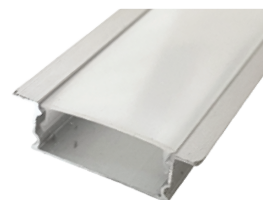
L NC.LED640.10



**ALUMINIUM ROUND SURFACE
LED DOWNLIGHT 3000K**

Thickness: 10mm
Size: Dia. 60mm
Finishing: Silver / Black
UOM: PC

L NC.LED650



**ALUMINIUM PROFILE WITH
PC COVER FOR LED STRIP**

Thickness: 0.4mm
Size: L3000 x W17.4 x H6.5mm
UOM: PC

L NC.LED521.10

**SILICONE LED STRIP HOUSING**

UOM: MTR

Size: W10 x H10mm

L NCS.LED1010.WH

Size: W20 x H10mm

L NCS.LED2010.WH**ALUMINIUM U BRACKET FOR SILICONE LED STRIP HOUSING**

UOM: PR

(FOR L-NCS-LED1010)

L NBK.LED1010.NK

(FOR L-NCS-LED2010)

L NBK.LED2010.NK**LEFT/RIGHT END CAP FOR L NC.LED660 ALUMINIUM PROFILE**

UOM: PR

L NEC.LED521.LR**LED FLEXIBLE STRIP LIGHT**

Size: 5.0 x 5.0mm, 120 BULB/M

Colour: White

UOM: RL

White, 6000K, Width: 10MM

L LED.F5050.60.WH

Warm White, 3000K, Width: 10MM

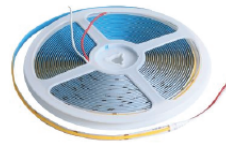
L LED.F5050.60.W**LED FLEXIBLE STRIP LIGHT - WARM WHITE**

Length: 2.8 x 3.5MM x 120 BULB

Specification: 7.2W/M (5M/ROLL)

Colour: Warm White, 3000K (Width: 5mm)

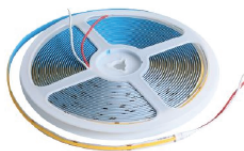
UOM: RL

L LED.Z52835.120.WW**COB LED FLEXIBLE STRIP LIGHT 12V 320 BULB/M - WARM WHITE**

Specification: 5M/ROLL

Colour: Warm White, 3000K (Width: 5mm)

UOM: RL

L LED.ZC5.320.WW**COB LED FLEXIBLE STRIP LIGHT 12V 320 BULB/M - WARM WHITE**

Specification: 5M/ROLL

Colour: Warm White, 3000K (Width: 5mm)

UOM: RL

L LED.ZC8.320.WW



Material: Aluminium + PC
Finishing: Black
Solar Panels: 5V / 25W
Battery: 3.2V / 30,000mAh
Color Temperature: 3,000K, Warm White
Charge Time: 3-5Hrs
Water Proof Grade: IP65
Size: 530 x H490mm

L SZ.GL003.490.BL30

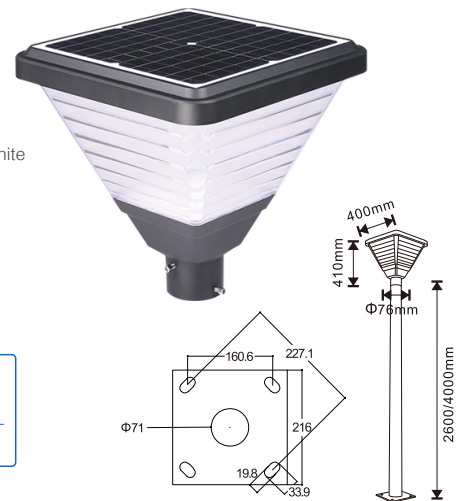
L SZ.GLP10.3000.BL (Post)



Material: Aluminium + PC
Finishing: Black
Solar Panels: 5V / 20W
Battery: 3.2V / 20,000mAh
Color Temperature: 3,000K, Warm White
Charge Time: 3-5Hrs
Water Proof Grade: IP65
Size: 400 x 400 x H410mm

L SZ.GL002.410.BL30

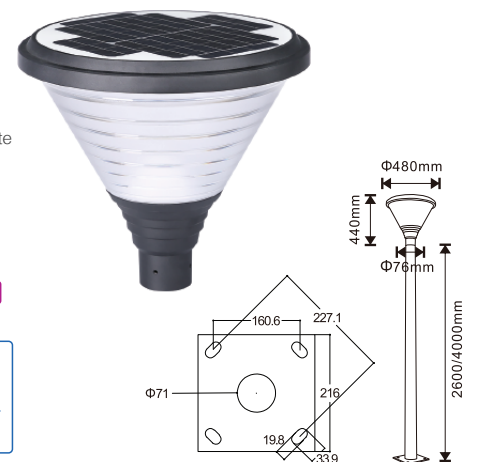
L SZ.GLP10.3000.BL (Post)



Material: Aluminium + PC
Finishing: Black
Solar Panels: 5V / 2W
Battery: 3.2V / 20,000mAh
Color Temperature: 3,000K, Warm White
Charge Time: 3-5Hrs
Water Proof Grade: IP65
Size: 480 x H440mm

L SZ.GL001.440.BL30


L SZ.GLP10.3000.BL30 (Post)

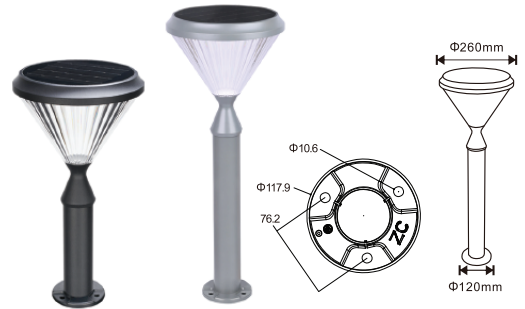




Material: Aluminium + PC
Finishing: Black / Grey
Solar Panels: 5V / 4.5W
Battery: 3.2V / 8,000mAh
Color Temperature: 3,000K, Warm Wh
Charge Time: 3-5Hrs
Water Proof Grade: IP65
Size: 260 X H500 / 750mm

L SZ.CP540.H.F30

 <p>Optical sensing</p>	<p>2835 Microchip  </p> <p> 3.2V~ 80/160PCS</p>
--	--



Optional:-
SLIME GROUND INSTALLATION
Material: Aluminium
Finishing: Black

L ACC.SZ.GS01



Material: Aluminium + PC
Finishing: Black
Solar Panels: 5V / 4.5W
Battery: 3.2V / 6,400mAh
Color Temperature: 3,000K, Warm White
Charge Time: 3-5Hrs
Water Proof Grade: IP65
Size: 230 X H300 / 600mm





L SZ.CP300.H.F30

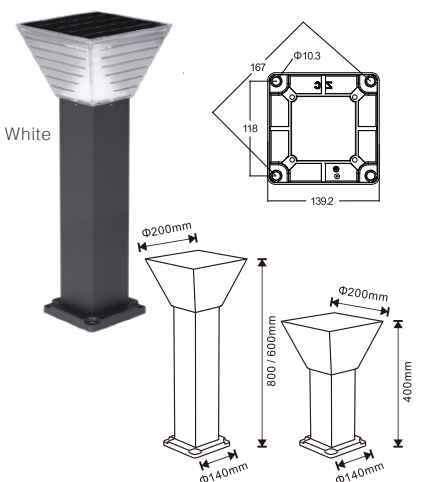
 <p>Optical sensing</p>	<p>2835 Microchip  </p> <p> 3.2V~ 80/160PCS</p>
--	--



Material: Aluminium + PC
Finishing: Black
Solar Panels: 5V / 5W
Battery: 3.2V / 6,400mAh
Color Temperature: 3000K-6000K; Warm White; Cool White
Charge Time: 3-5Hrs
Water Proof Grade: IP65
Size: 260 x H400 / 600 / 800mm

L SZ.CP500.H.BL30

 <p>Optical sensing</p>	<p>2835 Microchip  </p> <p> 3.2V~ 80/160PCS</p>
--	--





Material: Aluminium + PC
Finishing: Black
Solar Panels: 5V / 4.5W
Battery: 3.2V / 8,000mAh
Color Temperature: 3,000K, Warm White
Charge Time: 3-5Hrs
Water Proof Grade: IP65
Size: 260 X H370mm

L SZ.BD400.370.BL30

<p>Optical sensing</p>	<p>2835 Microchip </p>
	<p>3.2V ~ 80/160PCS</p>



Material: Aluminium + PC
Finishing: Black
Solar Panels: 5V / 5W
Battery: 3.2V / 6,400mAh
Color Temperature: 3000K-6000K; Warm White; Cool White
Charge Time: 3-5Hrs
Water Proof Grade: IP65
Size: 200 x H240mm

L SZ.BD600.240.BL30

<p>Optical sensing</p>	<p>2835 Microchip </p>
	<p>3.2V ~ 80/160PCS</p>

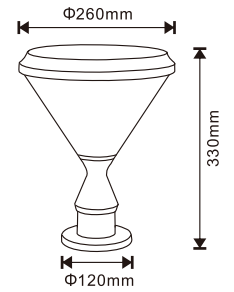
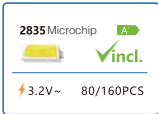
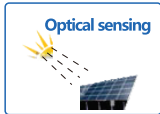


Material: Aluminium + PC
Finishing: Black
Solar Panels: 5V / 4.5W
Battery: 3.2V / 6,400mAh
Color Temperature: 3,000K, Warm White
Charge Time: 3-5Hrs
Water Proof Grade: IP65
Size: 230 X H275mm

L SZ.BD300.275.BL30

<p>Optical sensing</p>	<p>2835 Microchip </p>
	<p>3.2V ~ 80/160PCS</p>





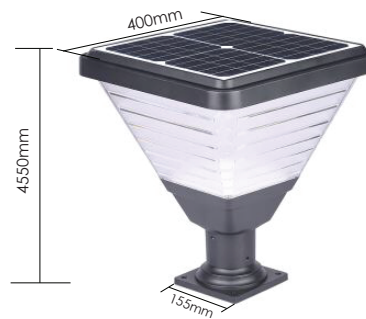
Material: Aluminium + PC
Finishing: Black
Solar Panels: 5V / 4.5W
Battery: 3.2V / 8,000mAh
Color Temperature: 3,000K, Warm White
Charge Time: 3-5Hrs
Water Proof Grade: IP65
Size: 260 X H330mm

L SZ.ZD540.330.BL30



Material: Aluminium + PC
Finishing: Black
Solar Panels: 5V / 25W
Battery: 3.2V / 20,000mAh
Color Temperature: 3,000K, Warm White
Charge Time: 3-5Hrs
Water Proof Grade: IP65
Size: 480 x H480mm

L SZ.ZD001.480.BL30



Material: Aluminium + PC
Finishing: Black
Solar Panels: 5V / 25W
Battery: 3.2V / 20,000mAh
Color Temperature: 3,000K, Warm White
Charge Time: 3-5Hrs
Water Proof Grade: IP65
Size: 400 x 400 x H455mm

L SZ.ZD002.455.BL30